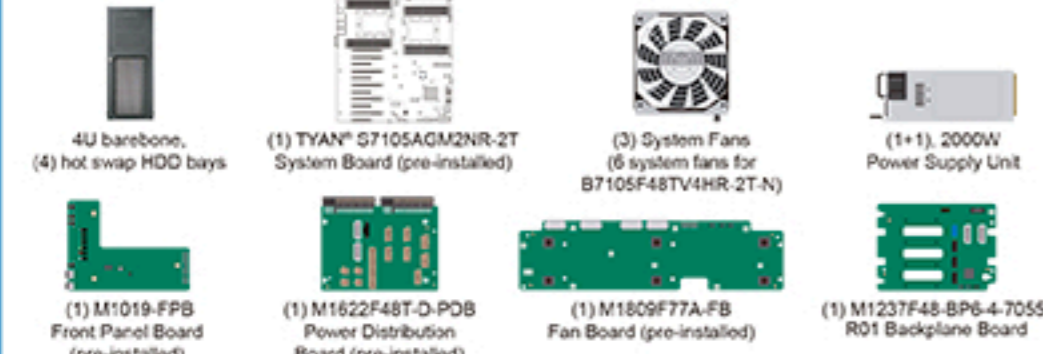


1 General Information

Read Me First

- The Barebone User's Manual is available for download from our Web site at <http://www.tyan.com>. Make sure to read all precautions and instructions before you start installing the server system.
- Refer all servicing to qualified personnel to avoid the risk of damage to the server system.
- Exercise normal ESD (Electrostatic Discharge) procedures during system integration. TYAN/MTAC recommends wearing gloves and an anti-static wrist strap to avoid possible damage to the equipment.
- Current processor socket design places the pins on the motherboard instead of the processor itself. Exercise caution when installing the processors as the manufacturer's warranty does not cover damage inflicted upon the motherboard, including damage to the CPU sockets.

Box Content



Accessories



Required Hardware Components

- Minimum Hardware Requirements**
- Processor: Support (2) Intel® Xeon® Scalable processors
 - Memory Type: (5+4) DIMM slots of DDR4 2666 MHz R-DIMM memory
 - Hard Disk Drives: 2.5" or 3.5" SATA/SAS HDD
 - Rack Mount Kit: Standard 19" equipment rack
- NOTE:** The updated hardware requirements of the system please refer to the barebones user's manual on our website at <http://www.tyan.com>

Tools Required

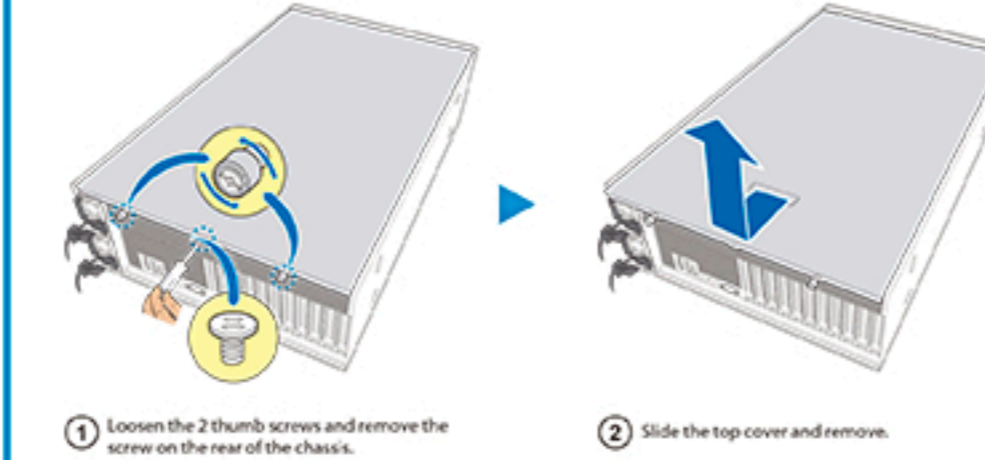


2 System Installation

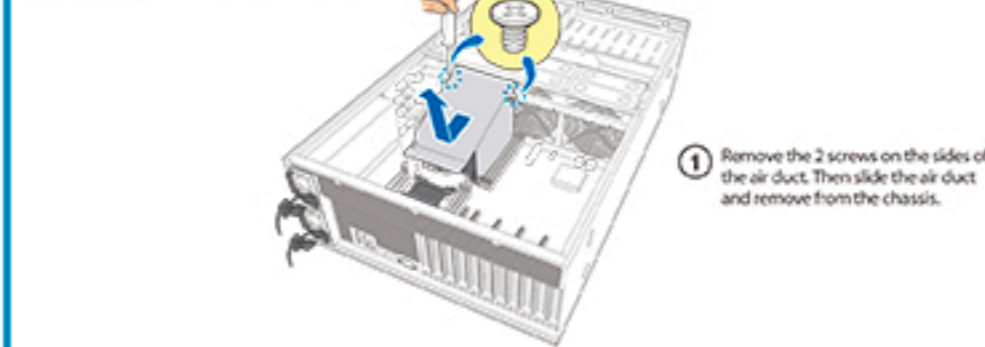


Open the Chassis

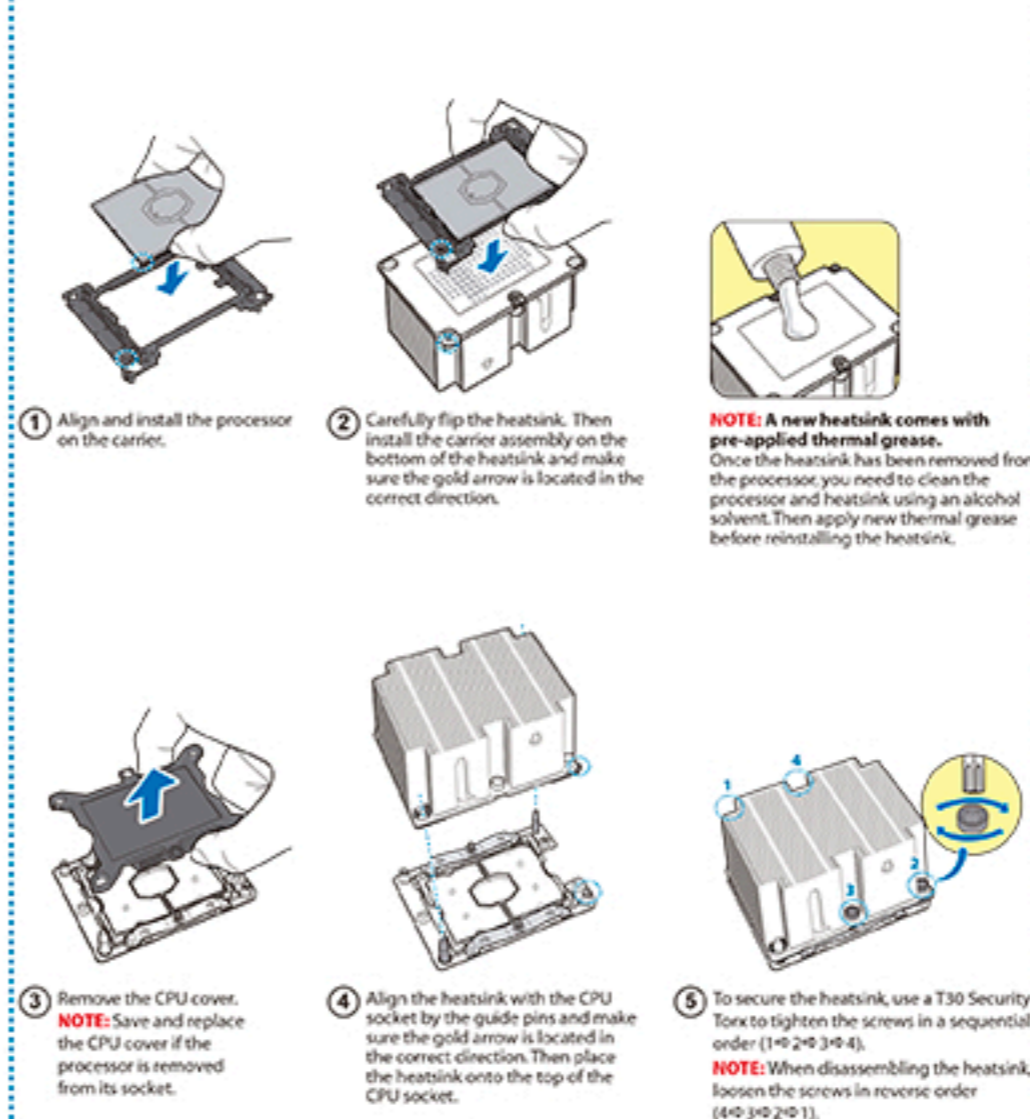
Preparing the Chassis
Read normal ESD (Electrostatic Discharge) procedures.
Place your TYAN® Server Chassis on a flat anti-static surface to perform the following integration procedures. Read ESD procedures before reaching inside to install components.



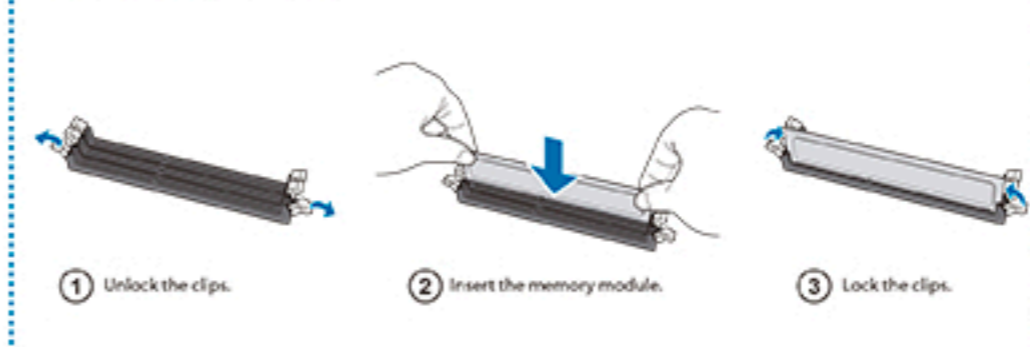
Remove the Air Duct



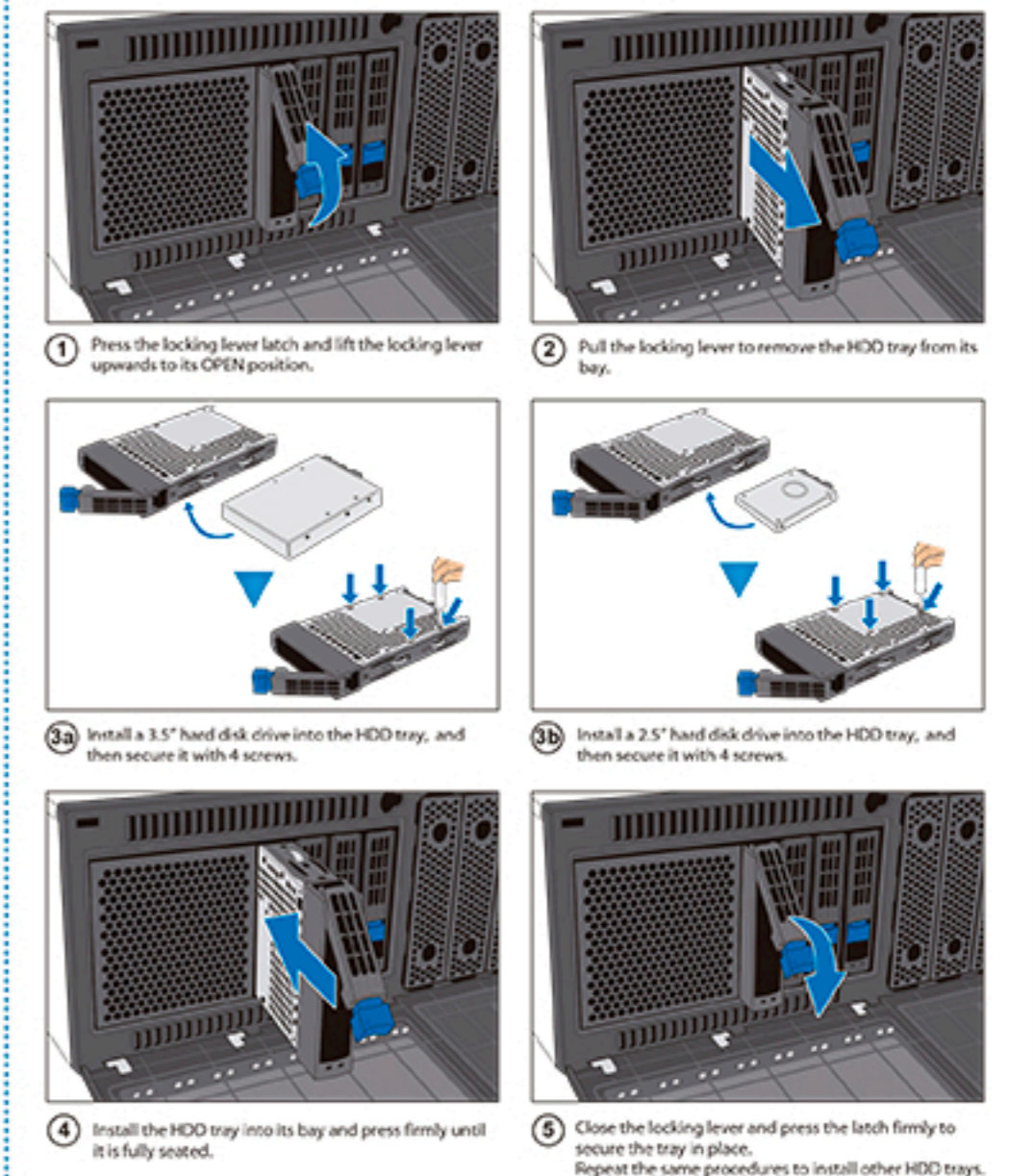
Install the Processor



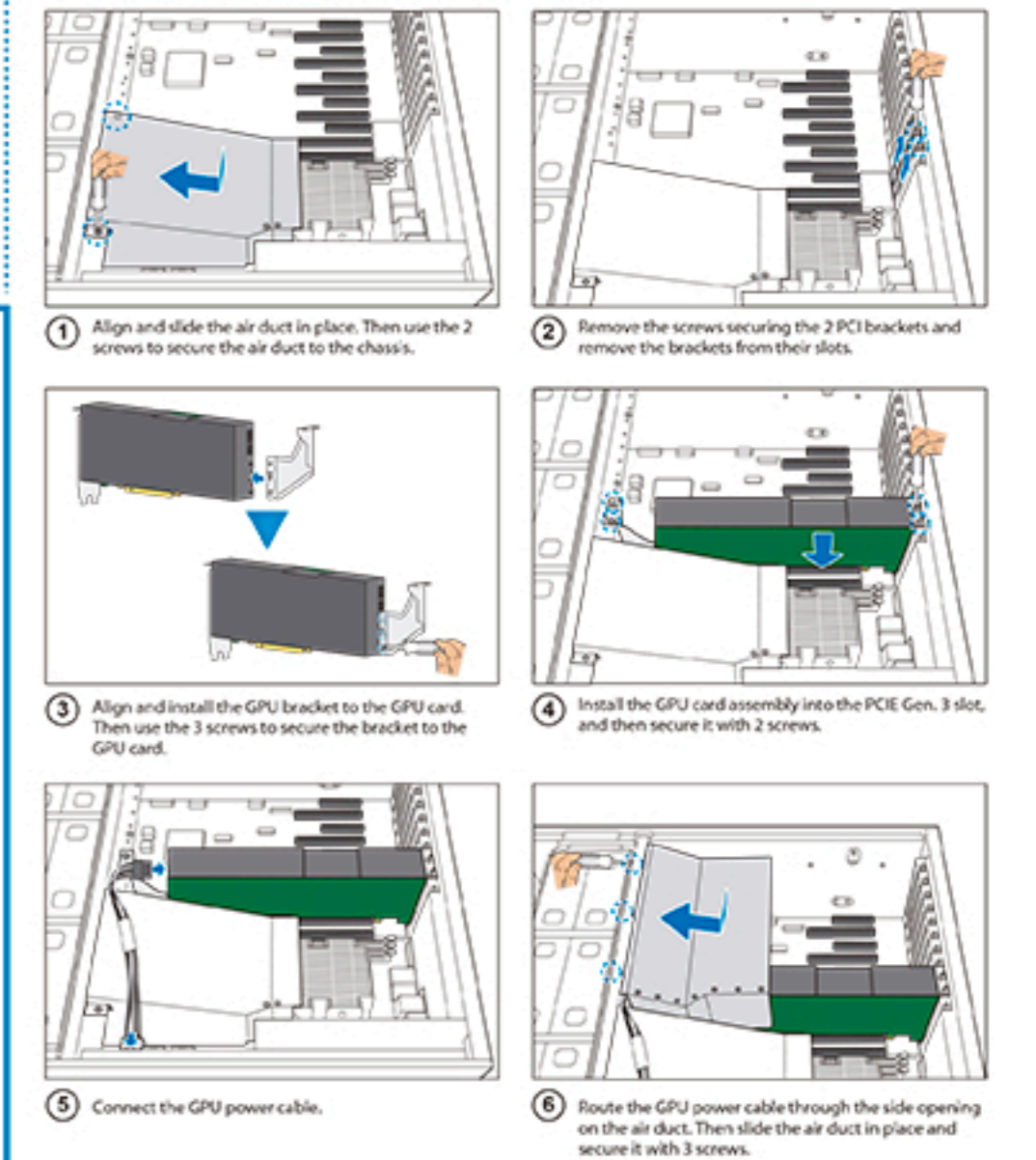
Install the Memory



Install the Hard Disks (3.5" or 2.5")

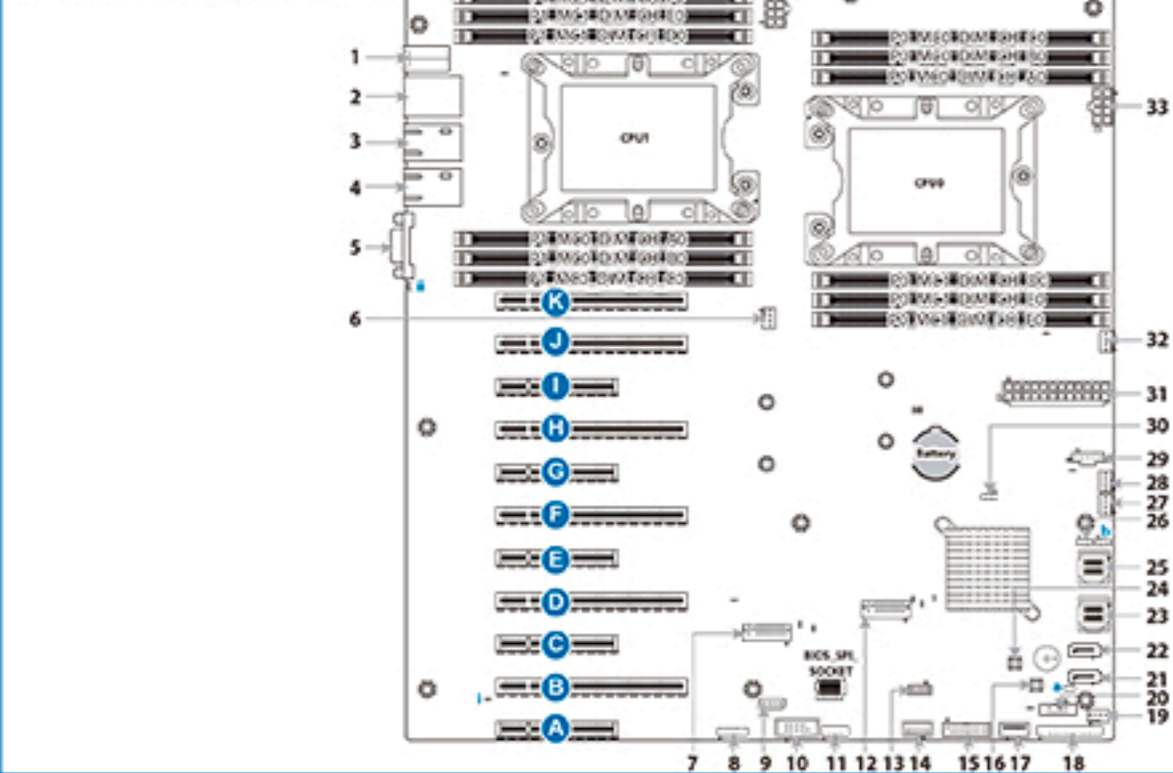


Installing the Add-On card (Optional)



3 Motherboard Placement

Motherboard Placement



CONNECTORS

- | | | |
|--|---|--|
| 1 AUDIO PHONE JACK, 13P, VERTICAL, D3 (J2) | 13 SATA RAID KEY (J122) | 24 System Reset Button (RST_BTN1) |
| 2 Dedicated IPMI port + USB3.0x2 (USB3_IPMI_LAN1) | 14 TYPE-A USB2.0 Connector (TYPEA_USB2) | 25 SATA - Serial Advanced Technology Attachment Gen3 (SATA4_7) |
| 3 LAN (RJ-45) (J184) | 15 Front USB3.0 Connector (USB3_FFPD2) | 26 FLASH SECURITY OVERMODE (J119) |
| 4 LAN (RJ-45) (J183) | 16 System Power Button (PWR_BTN1) | 27 USB3.0-TYPE-RA (TYPEA_USB3) |
| 5 VGA/COM-PA (VGA1) | 17 System FAN Connectors (SYS_FAN_3) | 28 System FAN Connectors (SYS_FAN_2) |
| 6 CPU FAN Connectors (CPU_FAN_1) | 18 Front Panel Connector (DSL_FPI) | 29 System FAN Connectors (SYS_FAN_1) |
| 7 M.2 2280/22110 slot (PCI-e x2 from PCH) (NGFF1) | 19 System FAN Connectors (SYS_FAN_4) | 30 PM1_PCH_BIOS_RCVR_SPPR (U194) |
| 8 FP-VGA-HD (VGA2) | 20 SSGPIO Header (SSATA_SGPIO1) | 31 12P2_ATX_PWR (PWCN1) |
| 9 IPMB Pin Header (IPMB_HD1) | 21 sSATA - sSerial Advanced Technology Attachment Gen3 (SSATA0) | 32 CPU FAN Connectors (CPU_FAN_1) |
| 10 COM-Port HSD (HID_COM2) | 22 sSATA - sSerial Advanced Technology Attachment Gen3 (SSATA1) | 33 4P2_ATX_PWR (PWCN2) |
| 11 SP*2_USB2.0x2 HD (J43) | 23 SATA - Serial Advanced Technology Attachment Gen3 (SATA0_3) | 34 System FAN Connectors (SYS_FAN_1) |
| 12 M.2 2280/22110 slot (PCI-e x2 from PCH) (NGFF2) | | 35 4P2_ATX_PWR (PWCN2) |

SLOTS

- A PCI Express Gen 3 x8 (PCI_E_1)
- B PCI Express Gen 3 x16 (PCI_E_2)
- C PCI Express Gen 3 x8 (PCI_E_3)
- D PCI Express Gen 3 x16 (PCI_E_4)
- E PCI Express Gen 3 x8 (PCI_E_5)
- F PCI Express Gen 3 x16 (PCI_E_6)
- G PCI Express Gen 3 x8 (PCI_E_7)
- H PCI Express Gen 3 x16 (PCI_E_8)
- I PCI Express Gen 3 x8 (PCI_E_9)
- J PCI Express Gen 3 x16 (PCI_E_10)
- K PCI Express Gen 3 x16 (PCI_E_11)

LEDs

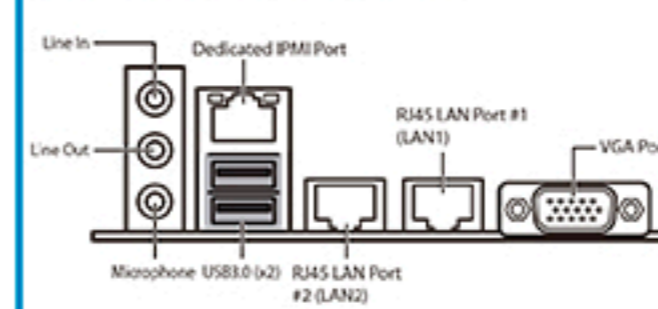
- I BMC Heartbeat-LED (BMC_HB_LED)
- J ID_LED BLUE_3010 (ID_LED)

JUMPERS

- I INTRUDER JUMPER (J002)
- J CMOS CLEAR JUMPER (J104)

4 I/O Ports

Locate the External I/O Port



5 Caution

CPU Cover for DOA/RMA

NOTE: Please save and replace the CPU protection cap when returning the server board for service.

